



Company Profile

Infrastructure built on relationships

Edition 4



TABLE OF CONTENTS

4	Introduction and overview
8	Our mission and core values
12	Company history and about us
18	HSQE & Sustainability
20	Services and specialisations:
22	• Construction capabilities
26	• Civil capabilities
34	Haptix by CMT Group
38	Projects
57	Testimonials and references
58	Giving Back
59	Join our team



INTRODUCTION AND OVERVIEW

At CMT Group, we believe the strongest foundations start with people. Since 1996, we've been shaping communities across Marlborough, Canterbury, and the South Island. Not just with concrete and steel, but with trust, teamwork, and a commitment to delivering on every promise.

We're a passionate family-owned civil and construction company that's big on ideas and grounded in values. From infrastructure and siteworks to complete builds and retrofits, we bring practical expertise to every job.

WHAT MAKES US DIFFERENT?

OUR ABILITY TO OFFER BOTH CIVIL AND CONSTRUCTION SERVICES UNDER ONE ROOF



We deliver high-quality construction and building solutions across a wide range of sectors, including social housing, commercial, civil, and infrastructure projects. With a strong focus on collaboration, safety, and efficiency, our team manages every stage of the build—whether it's site preparation, structural work, or project delivery. Backed by experienced project managers, qualified tradespeople, and trusted subcontractors, we bring technical expertise and practical know-how to every site. From complex builds to tight timeframes, we deliver well-built, functional spaces that stand the test of time.

This unique combination of civil and construction under one roof allows us to seamlessly manage entire projects from the ground up. Streamlining communication, reducing downtime, and ensuring a high level of consistency and quality across every stage.



We have a proven track record in delivering civil infrastructure projects that are safe, sustainable, and built to last. Our civil capabilities span earthworks, drainage, roading, retaining structures, utility installations, and siteworks for subdivisions and commercial developments. With an experienced team, a modern fleet, and a deep understanding of environmental and compliance requirements, we tackle complex sites and challenging conditions with confidence. Whether we're working in urban centres or remote locations, our focus remains the same, quality outcomes, delivered on time and with care for the communities we serve.



Haptix is the architectural safety brand of CMT Group, delivering innovative tactile and stairway solutions that blend form, function, and compliance. Our products, including tactile ground surface indicators (TGSI), stair nosings, and anti-slip treads, are designed to enhance pedestrian safety while complementing modern design aesthetics. With a team of technical experts and certified installers across New Zealand, Haptix supports architects, engineers, and contractors from specification through to installation. We're committed to making built environments more accessible, safe, and visually cohesive. Architectural safety-scaping from the team that delivers.

Let's shape the future together, with hard hat mahi, humble foundations, and a people-first approach.

CONTACT US TODAY
TO FIND OUT HOW WE
CAN BRING YOUR NEXT
PROJECT TO LIFE



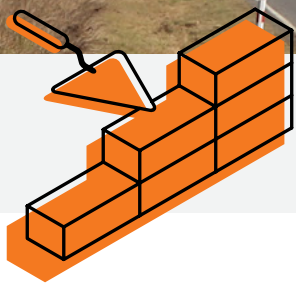
MISSION

To be the most desirable family owned construction workplace in New Zealand

CORE VALUES

- Humble foundations
- Project begins with our people
- Hard hat mahi
- Building for the future





HUMBLE FOUNDATIONS

FROM THE PAVERS UP INTO A RENOWNED MALBOROUGH COMPANY

We act with integrity and take appropriate consequences to eliminate unethical and noncompliant behaviours.

- We break the silos and join forces across the Group to achieve common objectives
- We speak up and actively listen with an open mind
- We are valued for our distinct characteristics that make us who we are
- We use open and honest communications to build trust.

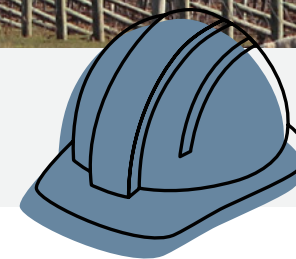


THE PROJECT BEGINS WITH OUR PEOPLE

DEDICATED TO FOCUS ON HSQE, WELLBEING AND OUR FAMILY

We create an engaging and inclusive workplace that favours wellbeing, fun and trust to drive teamwork.

- We do not compromise on people, safety, quality and delivery
- We strictly follow, apply and promote agreed standards
- We speak up when our integrity principles are not respected.



HARD HAT MAHI

WE WORK HARD TO GET THE JOB DONE ON TIME WITHIN BUDGET, TO A HIGH STANDARD

We invest in creating comprehensive plans and procedures that drive productivity.

- We are service minded, embedding our customer's satisfaction into our mind set and going the extra mile to exceed expectations
- We focus on continuous improvement, question the status quo and improve processes and services.



BUILDING FOR THE FUTURE

WE INVEST IN OUR COMMUNITY AND FUTURE GENERATIONS

We partner with our customers and communities to deliver valuable and sustainable solutions together.

- We inspire ourselves and others to face issues, welcome problems and apply problem solving methodology to eliminate recurrences
- We encourage open dialogue, giving and receiving feedback
- We value and embrace diversity.

COMPANY HISTORY

Travel back to 1995, the year Jonathan Faulkner embarked on a paving odyssey that would redefine the landscape.

Inspired by his father-in-law, Jonathan entered the landscaping arena, shaping dry cast pavers for Marlborough and Nelson. By 1996, he sensed a niche in the paving market, giving birth to Conpavers – a name echoing “concrete pavers.” Armed with a truck, wheelbarrow, and determination, Jonathan laid the foundation for excellence.

Starting small but determined, Jonathan’s work caught the eye of Downer Engineering and Fulton Hogan, cementing enduring partnerships. The ‘98 Blenheim CBD project tested his mettle, laying 30 meters of pavers daily despite harsh winters. Business grew, necessitating a headquarters and expanding the team.

Conpavers’ mark flourished across Marlborough: from the Queen Charlotte lookout in ‘07 to London Quay’s transformation in ‘09. 2010 saw the acquisition of Total Tactilez, helmed by Jonathan’s son Jayden. A year later, Canterbury beckoned, broadening Conpavers’ reach.

In 2018, Conpavers, Total Tactilez, and MC Construction united as CMT Group, epitomizing unity, and growth. Family remained at the core, driving expansion from 35 in 2018 to over 100 in 2023, a testament to their unwavering dedication.

Jonathan’s message resonates;

Tenacity and hours yield a prosperous path.



ABOUT US

MEET THE FAMILY BEHIND THE DEDICATED TEAM OF EXPERTS



Our goal is to become the most desirable family-owned construction business to work for in New Zealand. Our strong work ethic, family values, and commitment to long relationships contributes to a fantastic company culture.

Anton
Director /
Contracts Manager
Qualified Drain Layer

“For me, it’s about making sure the crew get home safe, with a sense of accomplishment in what they’ve built that day. That’s the real win.”

Jayden
Director /
Haptix Brand Manager

“Good design should make life easier, safer, and better for the people who use it. That’s what drives me.”

Kenley
Director /
Operations Manager

“I’m a firm believer in leading from the front, getting stuck in, and leaving a job you’re honoured to show your family.”

Jonathan
Managing Director

“At the end of the day, it’s about looking after people. If our team and community are well, the rest falls into place.”

WE CARE ABOUT

Project delivery

We meticulously plan every aspect of a project from initial consultation to final delivery ensuring a smooth and organised process from start to finish.

Quality and craftsmanship

Precision, durability, sustainability, and meticulous attention to detail in design and construction.

Collaboration and partnership

Tailored solutions, client centric approaches, and seamless integration with construction and civil requirements.



KIWIRAIL BRIDGE

SUBCONTRACTORS TO HEB

SENIOR LEADERSHIP TEAM

CMT Group is supported by a dedicated senior leadership team spanning Health, Safety, Quality & Environment (HSQE), Human Resources (HR), Finance, and Marketing. These central services are shared across both the CMT Group and Haptix brands, ensuring consistent, high-quality governance and operational excellence throughout the business.

HSQE

Our HSQE team safeguards the wellbeing of our people, clients, and communities by embedding rigorous safety, environmental, and quality systems into every project. Their leadership ensures compliance with industry standards, fosters a proactive safety culture, and drives continuous improvement initiatives that protect both people and the planet.

Human Resources

The HR team champions our people-first culture, overseeing talent management, staff development, and wellbeing initiatives. By attracting, retaining, and supporting top-tier talent, they help sustain high-performance teams and a positive, engaged workforce across all sites and offices.

Finance

Our Finance team underpins the commercial strength of both brands. They provide financial oversight, risk management, and strategic advice that enables sound decision-making and long-term business sustainability. Their stewardship ensures projects are delivered on budget and our businesses remain financially resilient.

Marketing

The Marketing team drives brand growth and market presence, telling the story of our projects, people, and partnerships. Through strategic campaigns, stakeholder engagement, and digital communication, they position both CMT Group and Haptix as trusted, forward-thinking partners in the construction and architectural safety industries.

Together, these shared services strengthen our operations, enhance client value, and uphold the integrity and reputation of the CMT Group and Haptix brands.

ABOUT US

100%
of employees
paid above the
living wage

10
amount of
apprenticeships
supported over
the last 5 years

\$178M
amount of total value
of projects delivered
in the last 7 years

5000+m³
of concrete diverted
from landfill in 2024

Tōtika
certified and ISO
credited



100%
New Zealand Family
owned and operated

55%
of our senior
management team
are women



Civil and construction
service South Island
based





HSQE

HEALTH & SAFETY CERTIFICATIONS



We're committed to making our workplaces safe for everyone, from employees and subcontractors to visitors and the public. Our Health and Safety Management Systems exist to ensure all processes within our organisation are safe. We have a robust recruitment process and commit to comprehensive, ongoing safety training for all workers. As part of our safety culture, we include all staff in regular discussions about how to improve safety together.

CONSTRUCTION LEADERS IN HEALTH AND SAFETY

Subcontractors form a large part of CMT Group's workforce, and we make sure they understand and participate in our safety systems and share our safety values. Working with our subcontractors to improve safety is critical to achieving our goal of always safe, healthy, well and match-fit people.

To make it easier for all our people, we use cutting edge SHE software to make smarter health and safety decisions in everything we do. All employees and subcontractors have an app on their phones to provide real time information when required.

SUSTAINABILITY AND ENVIRONMENTAL RESPONSIBILITY

“GOOD PROJECTS AREN'T JUST
MEASURED BY WHAT WE BUILD,
BUT BY WHAT WE LEAVE BEHIND.”

—CMT GROUP PROJECT MANAGER

At CMT Group, sustainability isn't a tick-box exercise, it's about building responsibly for the future we'll hand to our kids. Every site, every decision, every project leaves a footprint, and we believe it should be a positive one.

We've implemented waste sorting bins at our construction sites and throughout our offices. Here we aim to reduce waste to landfill by 60-85%. The process involves having three main sorting bins or skips onsite for the disposal of plastic, paper, and metals. Timber waste generated is bundled up and resold. Or in other cases, repurposed into something useful for the community such as steppingstones for a local kindergarten.

With all our Kāinga Ora builds, the specification is to a Homestar 6 rating, which is the superior sustainable housing rating. In our office environments, we've swapped out standard rubbish bins for a variety of bins for paper, bottles, cans and waste, meaning fewer recyclable items are ending up in the landfill.

It's not just construction materials that are being repurposed. Removed trees from recent projects have found new life for the community. The firewood has been provided to local iwi and charities to keep more homes warm this winter. Other tree waste such as bark has been repurposed into mulch and other garden products to reduce environmental impact.

Over 100 trees
planted in our
team building
environment day

Recycled
PPE/Uniform into
dog beds

Supplied over 100m³
of firewood to local
whānau through iwi
partnerships in winter.





/SERVICES AND
SPECIALISATIONS



CONSTRUCTION CAPABILITIES

NEW BUILDS AND OFFSITE PREFAB MANUFACTURING

If you're in the early stages of planning new construction projects, such as a pump or chemical shed, a large commercial building, with concrete tilt panels, or steel structures, you can count on our team to be your trusted partner every step of the way. Our construction team can manage large subdivisions, and warehouse builds to meet your deadlines.

Our large yard means we can easily construct prefabricated buildings, bridges and more, and have them delivered to you, without the hassle of onsite restrictions. We're trusted partners with many large organisations such as Kāinga Ora so you can count on us delivering projects.

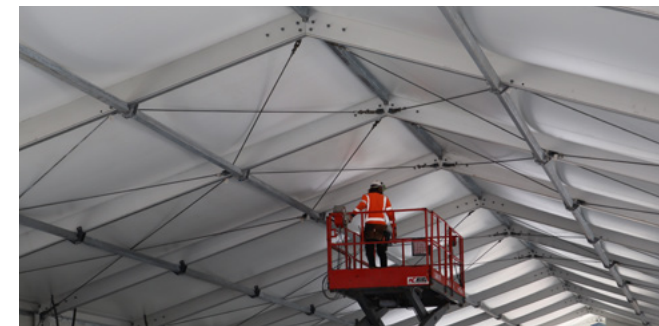
We offer a full design and build service, working closely with clients from concept to completion. Our team collaborates with trusted designers and engineers to deliver tailored, cost-effective solutions that meet project requirements while streamlining the build process. This integrated approach ensures greater control over timeframes, budgets, and outcomes.

"We engaged CMT Group to build a bespoke spray shed facility for our farming business. We provided a concept brief, and CMT did the rest (full design, engineering, consenting and construction). The result is a facility that is not only a dream to work in but has also provided great efficiencies to our business. Terry and the CMT team were a pleasure to work with and have a great can-do attitude. Nothing was ever a problem, and their workmanship is to a high standard. We would not hesitate to work with CMT again for any future construction projects we may have"

SIMON BISHELL - CAYTHORPE FARM LTD

ALTERATIONS AND MAINTENANCE

Wanting to make changes? We can help demolish buildings, refurbish your business, or make significant extensions to get the perfect office fit out or update. Send us your plans or ask us for suggestions on how you can make changes to suit your business.



SEISMIC STRENGTHENING

Adhere to seismic strengthening standards with upgrades and earthquake strengthening for commercial and industrial buildings. After working through the Christchurch earthquakes, we have an in depth knowledge of all possible structural upgrades and retrofit solutions for your existing building. Including innovative earthquake resistance solutions for new builds.

FIT-OUTS

Transform your hospitality, office, and retail spaces with our commercial fit-out construction services. From floor to ceiling, our teams work quickly to get your restaurant or business up and running as fast as possible, while keeping to our excellent standards.



SOCIAL HOUSING

We understand social housing goes beyond bricks and mortar; it’s about empowering individuals and families to thrive. That’s why we collaborate closely with local and national developers to deliver high-quality social housing projects. From underground civil works through to final construction, we have the experience and expertise to create quality homes.

All our projects are built to adhere to standardised specifications, such as Full Universal Design (FUD) From Kāinga Ora, ensuring inclusive, accessible living for residents. Your community’s needs are met with our wide range of housing options, from single-story units to multi-level apartments and duplexes. Our collaborative approach ensures the homes we build reflect your unique needs and aspirations, creating truly sustainable communities for generations to come.



as of August 2025

“These homes aren’t just walls and roofs. They’re someone’s start. That matters.”

CONSTRUCTION MANAGER



CIVIL CAPABILITIES

Get your civil project completed according to your timeframe, by using our experienced team. Your new subdivision, large earthworks, commercial roads, or drainage projects will be skilfully coordinated by our Project Managers to Tōtika Standards. Our vast range of completed projects will give you confidence in the quality and scale of our work. They also showcase our extensive capabilities across varying tasks at different locations.

Our experienced civil team have worked with multiple leading New Zealand organisations to complete their project. This includes Kiwirail, Waka Kotahi, iReX, and Kāinga Ora.



“CMT have delivered some highly complex and important works on the IREX Project safely, to a very high-quality standard, on time and within agreed commercial parameters. I would highly recommend CMT for undertaking similar works as described above – they are a very capable and committed team with a collaborative attitude.”

HARRY SINGH - KIWIRAIL PROJECT MANAGER



BULK EARTHWORKS AND SUBDIVISIONS

Easily establish your new subdivision or earthwork project with us by your side. Our kiwi ingenuity and years of experience with New Zealand soils and landscapes means we know the best way to approach land alterations. From commercial sites to residential subdivisions, and land clearing, we have the skills and machinery to handle the removal or reuse of large amounts of excavated material quickly and efficiently.



COMMERCIAL CIVIL AND SITE WORKS

Organise site excavation for your project with our expert team and inhouse equipment. From site reworks to full development, including soil or concrete removal, we can take care of it. Do your part for the environment and let us crush your waste concrete to repurpose on other projects.



COMMERCIAL ROADS AND CAR PARKS

Influence your key stakeholders with our Waka Kotahi approved civil capabilities. Our prequalification certificate for physical works at levels 1C for Routing & Minor Works, 2C for Surfacing, 3C for Bridge and Structure Construction and 4C for Construction means your commercial roading project can get started right away.



BRIDGES, TUNNELS, AND CONCRETE STRUCTURES

Manage your next complex build with us by your side. Our Impac Prequal qualification means you can be confident we constantly exceed or meet industry standards throughout. Your large multifaceted concrete structures, bridge or tunnel can be effortlessly planned and created by our team.

“CMT provide high quality work and, importantly, work in a professional, collaborative, and constructive manner to deliver positive outcomes. As a civil contractor they come very highly recommended and have a sound proven track record.”

**ROB HUNTER ENGINEERING GEOLOGIST / PROJECT
MANAGER TERRA FIRMA ENGINEERING LTD**



DRAINAGE AND PUMP STATIONS

Fabricate your stormwater, sewer pump or water-main upgrade with our certified drain layers. We'll adhere to your local council's regulations and environmental policies throughout the project.



TRENCHING WORKS

Easily complete your trenching project with our hydro excavation truck or directional drill. This enables a more precise excavation for installation of live services, pipework or ducting and culverts. For larger requirements we can use our extensive range of excavators and machinery.



RETAINING WALLS

Transform your landscape with the addition of retaining walls. They can be built in any range of materials to suit your site, and with our own excavators on hand, these projects can be completed quickly.



EV CHARGER INSTALLATION

We've recently excelled in installation of EV chargers across the South Island. Installing ev chargers at BP, GoBus and Z Energy to help them realise their sustainability vision.

OUR TECHNICAL CAPABILITIES INCLUDE:

- / Mitigating risk in highly controlled spaces such as a forecourt
- / Managing fire and spark risk during excavation
- / Flexible and efficient team for minimising customer disruption (so fuel sites can remain open while installation takes place)

"Congratulations to CMT Group NZ Ltd and Taylors – Urban | Infrastructure on delivering the project safely and to a high standard of quality. We are proud of the successful completion of this project which has enabled Manawa Energy's team to move into this new workspace next to the Argyle dam and power plant."

**PULKIT GOYAL - PROJECT MANAGER
TURNER AND TOWNSEND**



CRUSHING AND SCREENING

Our R3 crusher, paired with the Keestrack K4 screen, offers an efficient, sustainable, and cost-effective solution for crushing and screening needs. The K4 handles high-capacity screening of materials like aggregates, recyclables, topsoil, minerals, and construction waste.

The R3 crusher manages primary and secondary crushing of everything from natural rock to concrete and asphalt. It's perfect for turning waste into valuable materials, helping projects stay eco-conscious and within budget.

Choose flexible service options: we divert over 5,000m³ of concrete from landfill each year by crushing and repurposing. With expert handling and output of 250 tonnes per hour, quality results are guaranteed —wherever you need them.

**Ready to revolutionise your waste management?
Contact us now to discuss how the R3 crusher fits your project. Let's make your next endeavour efficient, eco-friendly, and exceptional.**



HYDRO EXCAVATION

If you're about to start your next civil project, then why not consider using a hydro excavation truck? Traditionally civil works such as installation of posts, poles, plumbing pipes and excavation have been done by hand. This is time consuming, poses safety risks to staff and can cause unnecessary damage to the surrounding land and wildlife.

A hydro excavation truck uses the process of pressurised water to remove soil by turning it into a dirt slurry. This slurry is sucked up into the truck and re-placed into the ground when the work is done. This is a non-invasive way to remove soil for uncovering small patches of underground areas to locate utilities or to excavate at greater depths.

- 1/ Save time
- 2/ Save money
- 3/ Less impactful on the environment
- 4/ Safety benefits are huge
- 5/ Resource can be delegated

CMT Group have a hydro excavation unit that is available for site works around Marlborough. Get in touch with us to book it for your next project.



DIRECTIONAL DRILLING

Directional drilling's core advantage is traversing waterways and rugged terrain without altering bridges or above-ground installations. This preserves pipes, ensures precise installation, and underscores our leadership in sturdy directional boring equipment.

Trenchless methods minimise disruptions and remove the need for excess digging, slashing time, and costs. Our rig enables efficient conduit installation and allows for time savings for you.



You can take advantage of reduced labour due to quicker operations, and minimal dirt disturbance that cuts expenses. Fewer permits, easy mobility, and enhanced access contribute to administrative and operational savings.

Traditional methods disrupt the soil with earth removal and contamination. Opting for a directional drill aligns with eco-conscious goals in cable, sewer, and utility installation.

Creating safer built environments
with innovative accessibility
solutions, supplied and installed
New Zealand wide.

Haptix (formerly Total Tactilez) is a brand of CMT Group.
Our products blend beauty and practicality, improving built
environments with safe, seamless solutions. Haptix products are
key design elements that enhance every space they're in.

Haptix

BY
CMT
GROUP





INTRODUCING THE HAPTIX DRILLING RIG

This state-of-the-art drilling rig is designed to meet the demands of modern construction and railway projects.

- Incredible drilling speed, approximately 13.8 times faster than conventional machines. With an impressive rate of 5170 holes per hour, this rig can significantly accelerate project timelines and boost productivity. It's the perfect solution for time-sensitive and large-scale drilling tasks.
- Effortlessly navigates curves with precision. This unique capability enables construction teams to access challenging terrains and execute projects in areas previously deemed inaccessible.
- With the Haptix drilling rig's exceptional speed and precision, tactile projects are completed in record time. Reduced time on-site means significant cost savings and increased overall project efficiency.
- Gone are the days of uncertain tactile installations. The Haptix drilling rig's precision drilling guarantees accurate installation of components, eliminating errors and costly rework. Ensure a seamless and flawless installation process every time.
 - Minimal site shutdown time.
 - Reduced dependence on Railway Protection Offices.
 - Less manual labour involved.
 - This cutting-edge drilling rig significantly reduces the need for manual labour, freeing up resources for more strategic and value-added tasks. Improve worker satisfaction and optimise your workforce.
- Our drilling rig implements best-in-class measures to mitigate environmental dust contamination. Enjoy cleaner worksites and adhere to strict environmental regulations without compromising productivity.



UNIVERSITY OF
AUCKLAND BG07



/PROJECTS

/CONSTRUCTION PROJECTS



KIWIRAIL

MECHANICAL DEPOT AND OPERATIONS OFFICE \$8 MILLION

Completed the underground works and construction of the new train mechanical depot along with the operations building in Picton. Part of the wider iReX project, this build was one of the most significant infrastructure upgrades undertaken.

CAPABILITIES:
CIVIL & CONSTRUCTION



KĀINGA ORA STRATFORD ST \$6.5 MILLION

We delivered 13 warm, modern, and resilient homes on Stratford Street in Blenheim. Built in just 13 months, this development features homes ranging from two to five bedrooms, designed with comfort and durability in mind.

CAPABILITIES:
CIVIL & CONSTRUCTION

KĀINGA ORA PATCHETT WAY \$5.82 MILLION

We constructed 15 two-bedroom stand-alone homes including all basic amenities. To ensure accessibility, a new roadway was developed, and the new street off South Street was named Patchett Way.

CAPABILITIES:
CIVIL & CONSTRUCTION





KIWIRAIL iReX

TEMPORARY TERMINAL \$8 MILLION

Developed foundation works and constructed a temporary ferry terminal for passengers, as part of iReX (Interisland Resilient Connection Project) under immense time pressure. We adapted to the clients' needs to provide additional reinforcing and extra civil work as needed.

CAPABILITIES:
CIVIL & CONSTRUCTION



KĀINGA ORA

BREWER STREET BLENHEIM \$4.3 MILLION

Awarded a merit award in the Property Industry awards 2023

Transformed an underutilised space into 14 brand-new, warm, dry homes, providing a much-needed housing solution for Marlborough families. Each house features 2 bedrooms and modern living facilities built to stand the test of time.

CAPABILITIES:
CIVIL & CONSTRUCTION



KĀINGA ORA

CHARLES ST \$4.35 MILLION

Ten one-bedroom houses (six stand-alone homes and two duplexes) including all basic amenities. To ensure accessibility, a new roadway was developed, and additional driveways were built from the road for units nine and ten on Charles Street and Richmond Street.

CAPABILITIES:
CIVIL & CONSTRUCTION



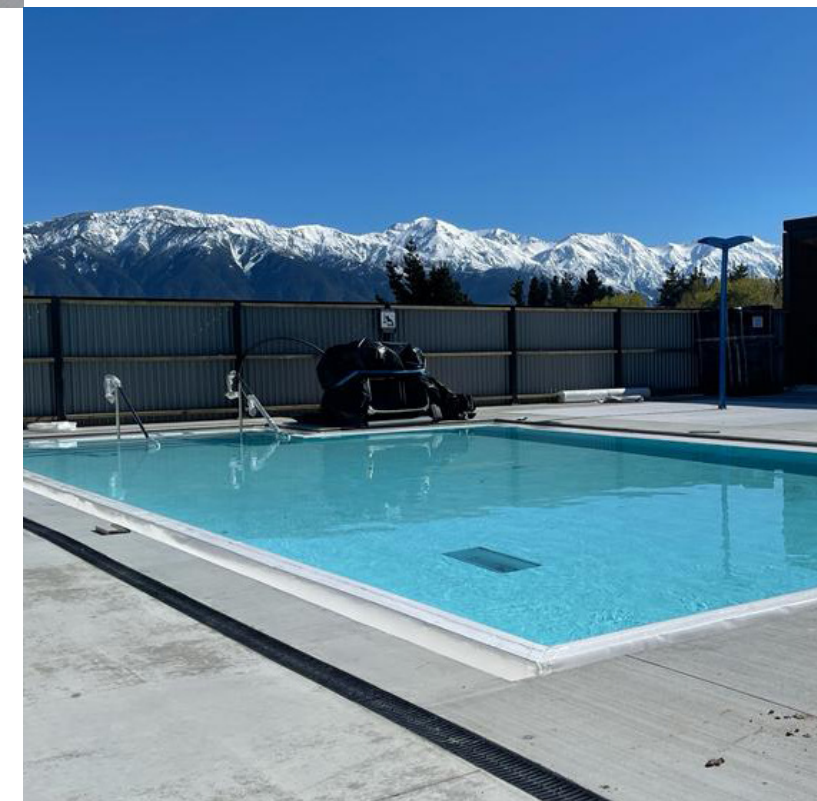
KAIKOURA DISTRICT COUNCIL

KAIKOURA AQUATIC CENTRE \$3.2 MILLION

A new outdoor town pool was funded by the community, and we delivered.

- Bulk earthworks
- Drainage and civil services
- Road and parking construction
- The construction of three swimming pools ranging from lap pool to toddler pool
- Construction of a changing room, toilets, pump house, reception surrounds, seating, and fencing.

CAPABILITIES:
CIVIL & CONSTRUCTION





HYDRALADA COMPANY LTD

HYDRALADA OFFICE BUILD BLENHEIM \$3 MILLION

CMT Group were the main contractor responsible for the implementation of this project.

- Completed major demolition to remove the prior building and create a fresh start for the construction to begin.
- Conducted all excavation work and infrastructure services for the new facility.
- Completed all building and carpentry work from bases through to building completion.
- Did all the internal fit-out. Created a comprehensive space to a high standard.
- Created concrete hard stand areas that will withstand the test of time.
- Completed all landscaping and final touches to make a practical, aesthetic space exactly as the client required.

CAPABILITIES:

CIVIL & CONSTRUCTION



KĀINGA ORA

ENSIGN ST CANTERBURY \$2 MILLION

Construction of four, one-bedroom single story homes on a lot size of 809m2.

As part of a larger package, including 23 Cobra Street, CMT Group was the main contractor for this project.

These duplexes are accessible and made to a 6 Homestar standard. We undertook the following:

- Completed civil work including installation of three waters and connections for other utilities.
- Formed and poured all concrete foundations with the support of reinforcing steel.
- Constructed four, one-bedroom houses safely and efficiently to Kāinga Ora's plans and Homestar standards.
- Created roadway and completed landscaping leaving an aesthetic, made to last subdivision.

Successfully achieved compliance with the project specification and local authority requirements throughout the project.

CAPABILITIES:

CIVIL & CONSTRUCTION





SELWYN DISTRICT COUNCIL

VERNON DRIVE RESERVOIR \$1.38 MILLION

CMT Group built a circular concrete reservoir to supply roughly 1 million litres of water for the township of Lincoln, Canterbury. During the summer months Lincoln often suffered from drought and the town supply of water dwindled. Therefore, the community was happy to see a new water tank being built.

On the same site, a control building and pump building was also required to finish the project. The build of this included tilt slab panel construction.

CAPABILITIES:
CIVIL & CONSTRUCTION



AWATERE HUB COMMITTEE

AWATERE MARLBOROUGH \$1.18 MILLION

A new hub for Plunket, Awatere Early Learning Centre and Playcentre was funded by the community. Inclusive of three separate sections and playground. This building is a unique centre unlike any created before for these organisations. A central place for all the community to meet.

CAPABILITIES:
CIVIL & CONSTRUCTION



AGVANCE

AGVANCE WAREHOUSE AND OFFICE \$1.6 MILLION

The huge 2200-square-meter extension is constructed of concrete tilt panels and steel structure. Over the project we stood 45 panels in two and a half days, one of our most efficient projects.

CAPABILITIES:
CIVIL & CONSTRUCTION



SELWYN DISTRICT COUNCIL

PINES WASTEWATER TREATMENT PLANT \$1.1 MILLION

We were a subcontractor to Monadelphous. This project was split into two parts, the solar drying hall and a control room. CMT Group managed the whole design and build, including architecture.

CAPABILITIES:
CIVIL & CONSTRUCTION





HEB CONSTRUCTION

AVON RIVER CORRIDOR \$578K

This specification was for the carpentry package for the approach structures on the bridges along the Avon River Corridor. Some bridges are in the Red Zone and some partially in road corridors. The bridges are:

- Medway Bridge:** Adjacent to Medway Street (East) spanning towards Avonside Drive
- Avondale Bridge:** Adjacent to Briarmont Street (North) spanning towards New Brighton Road
- Snell Bridge:** Adjacent to Snell Place (South) spanning towards Avonside Drive

CMT Group was responsible for the supply of all plant, materials, and labour to construct access ramps at three locations along the Avon River corridor.

CAPABILITIES:
CIVIL



MARLBOROUGH DISTRICT COUNCIL SEYMOUR SQUARE RESTROOMS \$567K

This building was awarded Winner- Public Architecture: Marlborough District Council- Public Toilet Upgrades by Arthouse Architects. The works consisted of the demolition of half of the existing public toilet in Seymour Square followed by the construction of a new public toilet building housing.

CAPABILITIES:
CIVIL & CONSTRUCTION

MANAWA ENERGY LAKE ARGYLE OFFICE \$471K

The new office at lake Argyle is the first improvements for Manawa Energy since the original, iconic, building was erected in the 1980s. The new building allows for staff to comfortably work and meet near the dam.

CAPABILITIES:
CIVIL & CONSTRUCTION



/CIVIL PROJECTS

SUMMERSET / ISAAC GROUP

SUMMERSET RETIREMENT VILLAGE BLENHEIM \$7 MILLION

This project covered the second stage of the subdivision and road upgrade process. A major focus was on drainage works, including precise pipelaying and trench backfill compaction, expertly executed by CMT Group.

The scope included site clearing/scraping, bulk excavation of trenches for drainage lines, installation of new drainage lines, pipes and systems (stormwater and sewer), installation of 80 manholes, 46 sumps, five kilometres of pipes and many inspection joints, concrete/paving works and road formation

CAPABILITIES:

CIVIL



KIWRAIL / HEB CONSTRUCTION TUNNEL 21 \$5.3 MILLION

CMT Group were engaged by main contractor, HEB Construction, to undertake various civil and drainage works on this project. Through meticulous planning and execution, CMT Group installed three culverts under the rail line in a strict 36-hour period during which train traffic was halted.

CAPABILITIES:

CIVIL





MARLBOROUGH DISTRICT COUNCIL

BOULEVARD PARK ON TAYLOR \$2.5 MILLION

This is a fantastic demonstration of our civil capabilities on a major subdivision. On Stage 7 of the Boulevard Park on Taylor, the Marlborough District Council engaged CMT Group to carry out all sub-division works as a main contractor.

CAPABILITIES:

CIVIL



THE WHALE TRAIL TRUST

THE WHALE TRAIL \$2 MILLION

We completed almost 20km of cycle trail between Blenheim and Picton. Clearing vegetation, inserting culverts and off-site prefabricated cycle bridges.



CAPABILITIES:

CIVIL & CONSTRUCTION



EV CHARGERS: BP AND Z ENERGY \$1.25 MILLION TO DATE

We installed a myriad of EV chargers for BP around Canterbury. These installations required multiple skills including:

- Mitigating risk in highly controlled spaces: Working underneath a forecourt
- Managing fire and spark risk during excavation
- Flexible and efficient team for managing customer disruption
- Coordinating with onsite contractors

These technical challenges provided valuable opportunities for growth and innovation, allowing us to demonstrate our expertise and commitment to delivering exceptional results. We overcame obstacles while maintaining the highest standards of safety, efficiency, and customer satisfaction.

CAPABILITIES:

CIVIL & CONSTRUCTION





KIWIRAIL

iReX TURNTABLE \$1 MILLION

We created a base for the turntable and used state of the art equipment and meticulous accuracy to ensure no damage was done to existing underground works.

CAPABILITIES:
CIVIL & CONSTRUCTION



BROSINAN

QCC DEMOLITION AND UPDATES \$1.7MILLION

We safely delivered the controlled demolition of the Science & Technology, Administration, and Library blocks within a live school environment, including the removal of hazardous asbestos. The team then completed bulk excavation, gravel raft installation, and constructed new concrete paths, patios, and asphalt surfaces to enhance campus accessibility. Close coordination with the main contractor and school ensured the works were completed efficiently, safely, and with minimal disruption.

CAPABILITIES:
CIVIL



CITYCARE CANTERBURY

TAKAPŪNEKE MEMORIAL RESERVE \$1 MILLION

We worked with local Tāngata Whenua and City Care to develop a memorial that pays respect to the history of the area. Special Tapu rituals were accounted for when developing this land.

The works comprised of earthworks (cutting and filling), the construction of low retaining walls and landscape features within the upper north-eastern portion of Greens Point Reserve (Wider Takapūneke Reserve) and the installation of a pou.

CAPABILITIES:
CIVIL & CONSTRUCTION



ECL

GO BUS EV CHARGER DEPOT – MACES ROAD CHRISTCHURCH \$250K

As a subcontractor to ECL group, we constructed the first Go Bus electric charger depot in New Zealand. Based in Maces Road, the depot which consists of 25 Siemens EV chargers is the first in a network of electric vehicle chargers at Go Bus depots across the region. Conducted all excavation work and infrastructure services for the new chargers. Completed all the building work for the bases of each unit. Finished off the surrounding area ready for vehicles to use the service.

CAPABILITIES:
CIVIL





RENWICK

WATER TREATMENT PLANT \$170K

Completed the construction work for the new Renwick Water Treatment Plant facility. Worked alongside Simcox and Mason Engineers to build the new infrastructure to support the growing community.



TESTIMONIALS AND REFERENCES

“CMT have recently completed the construction of a purpose-built early childhood facility incorporating Awatere early learning centre, Awatere Playcentre and Plunket on the Seddon School grounds. CMT outlined how they intended to complete the project during the tender process and were awarded the contract to construct the facility.

Their management and communication during the project was excellent. The regular reports provided were just what the trust needed to show our stakeholders and community as the project progressed. Due to the resources and capabilities provided by CMT the project tracked better than we would have expected given the delays caused by weather and Covid.

Awatere ECE Hub Community Trust with the help of CMT has provided a well-built top quality community asset which will provide benefits for our wider community for generations to come.

We would highly recommend CMT to any group looking to provide a similar asset to their community.”

PHIL MUIR, CHAIRPERSON, AWATERE ECE HUB COMMUNITY TRUST

APPROVED PROVIDER FOR



GIVING BACK SPONSORSHIPS

CMT Group worked together with our staff to identify key organisations and raise awareness of their cause. The three organisations that most aligned with our vision are Mates in Construction, Trees That Count, and Ronald McDonald House Charities. Each year we will donate to each cause and actively promote awareness of each charity.



FUTURE OF WORK

Community is at the heart of what we do. Alongside our sponsorships, we also support local events to improve our community. The Future of Work event is Marlborough's primary vocational event, encouraging young people to find a career path that suits them. We work alongside the Marlborough District Council and other local organisations to provide a window into construction and civil careers. In 2024 we were awarded the 'Above and Beyond award' for our contributions.



"If one young person walks away thinking, 'I could do this one day,' then we've done our job."

CMT EVENT VOLUNTEER



JOIN OUR TEAM

JOIN OUR GROWING TEAM IN THE SOUTH ISLAND -
HEAD TO **CMTGROUP.CO.NZ/WORKFORUS** TO SEE
OUR LIST OF VACANCIES.

We have a dream to become the most desirable construction workplace. This means when you start with us, you'll be welcomed with open arms.

At CMT Group the expectations are higher, and the rewards are greater. That's how we deliver exceptional service to our customers. From our Sales team to Truck Drivers, our performance matters and that's why we have industry leading benefits and rewards. We're dedicated to building for the future, so we invest in our community and future generations.

APPRENTICESHIPS

While having qualified team members is a must, we recognize the value apprentices can bring. Our staff turn up to work with a purpose and a mission to complete their studies. We'd recommend instilling an Apprenticeship Program to any construction company as a way of sharing knowledge and increasing staff engagement. If you're thinking about a career in construction or civil engineering, get in touch with us.





Contact Us

/// **Blenheim**
12 Taylor Pass Road,
Witherlea,
Blenheim 7201

/// **Christchurch**
101 Sturrocks Road,
Casebrook,
Christchurch 8051

/// **Auckland**
62 Tidal Road,
Mangere,
Auckland 2022
- Haptix

/// **Wellington**
Unit 21,
2 Northpoint St,
Plimmerton,
Wellington 5026
- Haptix

/// **Tauranga**
Level 1,
36 Cameron Road,
Tauranga 3110

0800 147 433
info@cmtgroup.co.nz
cmtgroup.co.nz