

CMT Group Company Profile

Edition 3



Infrastructure built on relationships

CMT
GROUP



In this booklet

Table of contents

Introduction and overview	1
Our mission and core values	2
Company history and about us	3
Services and specialisations:	5
- Civil capabilities	7
- Construction capabilities	12
- Total Tactilez products	16
Expertise and experience:	17
- Blenheim project portfolio	17
- Canterbury project portfolio	23
- Total Tactilez portfolio	29
Testimonials and references	33
Clientele and partnerships	34
Sustainability	34
Sponsorships	35
HSQE	35
Join our team	36

All information in this brochure is correct as of January 2024

Introduction and overview

Introducing CMT Group – a civil and construction team that prioritises infrastructure built on relationships.

At CMT Group, we're not just another construction company. We've been transforming the construction landscape throughout Marlborough, Canterbury, and the South Island of New Zealand since 1996. As a dynamic, family-owned business, we thrive on change and continuously evolve to deliver excellence in civil work, landscaping, paving, and both commercial and residential construction.

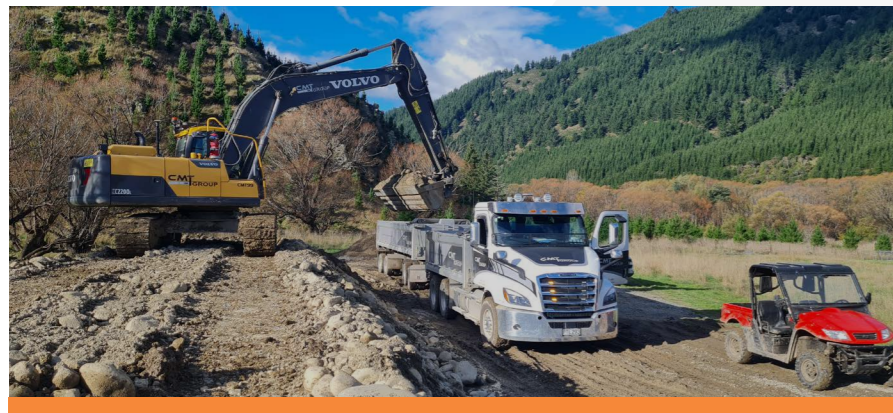
What sets us apart?

Our unwavering commitment to innovation and investment in skilled staff and cutting-edge machinery. We specialise in drainage, concrete, building, and tactiles, harnessing our diverse range of skills to tackle any construction job or Architectural safety solutions across the entire country. With over 100 dedicated team members and a rapidly expanding fleet of machinery, including excavators and unique tools, we have the resources to get the job done efficiently and effectively.

But it's not just our machinery that defines us. Our true strength lies in our kiwi ingenuity and deep understanding of New Zealand soils and landscapes. We know how to navigate land alterations and create construction projects built to withstand the test of time. With years of experience under our belt, we bring unmatched expertise and a fresh perspective to every project we undertake. We're able to seamlessly coordinate a wide range of services without ever compromising on quality. From conception to completion, we ensure a smooth and hassle-free experience for our clients. Your vision is our priority, and we are dedicated to bringing it to life with meticulous attention to detail and unwavering craftsmanship.

Join us as we shape the future of construction in New Zealand. Experience the CMT Group difference where modern techniques meet traditional values, and innovation meets reliability.

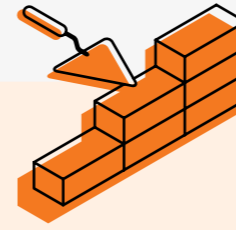
Contact us today to discuss your construction needs and discover how we can surpass your expectations. Together, let's build a future that stands the test of time.



Our mission and core values

Mission: To be the most desirable construction workplace in New Zealand

Core Values: Humble foundations, the project begins with our people, hard hat mahi, building for the future



HUMBLE FOUNDATIONS
FROM THE PAVERS UP INTO A RENOWNED MALBOROUGH COMPANY

We act with integrity and take appropriate consequences to eliminate unethical and noncompliant behaviours.

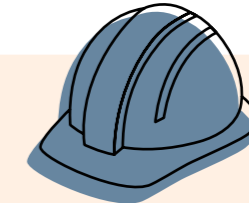
- We break the silos and join forces across the Group to achieve common objectives
- We speak up and actively listen with an open mind
- We are valued for our distinct characteristics that make us who we are
- We use open and honest communications to build trust.



THE PROJECT BEGINS WITH OUR PEOPLE
DEDICATED TO FOCUS ON HSQE, WELLBEING AND OUR FAMILY

We create an engaging and inclusive workplace that favours wellbeing, fun and trust to drive teamwork.

- We do not compromise on people, safety, quality and delivery
- We strictly follow, apply and promote agreed standards
- We speak up when our integrity principles are not respected.



HARD HAT MAHI
WE WORK HARD TO GET THE JOB DONE ON TIME WITHIN BUDGET, TO A HIGH STANDARD

We invest in creating comprehensive plans and procedures that drive productivity.

- We are service minded, embedding our customer's satisfaction into our mind set and going the extra mile to exceed expectations
- We focus on continuous improvement, question the status quo and improve processes and services.



BUILDING FOR THE FUTURE
WE INVEST IN OUR COMMUNITY AND FUTURE GENERATIONS

We partner with our customers and communities to deliver valuable and sustainable solutions together.

- We inspire ourselves and others to face issues, welcome problems and apply problem solving methodology to eliminate recurrences
- We encourage open dialogue, giving and receiving feedback
- We value and embrace diversity.

Company History

Inspired by his father-in-law, Jonathan entered the landscaping arena, shaping dry cast pavers for Marlborough and Nelson. By 1996, he sensed a niche in the paving market, giving birth to Conpavers – a name echoing “concrete pavers.” Armed with a truck, wheelbarrow, and determination, Jonathan laid the foundation for excellence.

Starting small but determined, Jonathan’s work caught the eye of Downer Engineering and Fulton Hogan, cementing enduring partnerships. The ‘98 Blenheim CBD project tested his mettle, laying 30 meters of pavers daily despite harsh winters. Business grew, necessitating a headquarters and expanding the team.

Conpavers’ mark flourished across Marlborough: from the Queen Charlotte lookout in ‘07 to London Quay’s transformation in ‘09. 2010 saw the acquisition of Total Tactilez, helmed by Jonathan’s son Jayden. A year later, Canterbury beckoned, broadening Conpavers’ reach. In 2018, Conpavers, Total Tactilez, and MC Construction united as CMT Group, epitomizing unity, and growth. Family remained at the core, driving expansion from 35 in 2018 to over 100 in 2023, a testament to their unwavering dedication.

Jonathan’s message resonates;

*‘Tenacity and hours
yield a prosperous path.’*



Anton, Jayden, Jonathan, Kenley

About Us

Meet the family behind the dedicated team of experts.

Our goal is to become the most desirable construction business to work for in New Zealand. Our strong work ethic, family values, and commitment to long relationships contributes to a fantastic company culture. Meet the family:

Jonathan Managing Director

Jonathan sits at the helm of CMT Group. He’s worked with a wide range of engineers and managers across numerous contracts over the past 25+ years and brings to the team a strong solutions-focus that drives benefits for both the clients and the engineers.

Anton Director / Operations Director Qualified Drain Layer

Anton’s dedication to our organization is unparalleled, as he consistently goes above and beyond to ensure the success of our civil projects. His extensive knowledge of contracts and pricing not only streamlines our operations but also contributes significantly to our bottom line, making him an indispensable asset to our team.

Jayden Director / Sales and Finance Director

Jayden holds an in-depth knowledge of our non-slip Tactile Safety and Architectural products and services and oversees our sales team performance.

Kenley Director / Civil Manager Qualified Drain Layer

Kenley is a passionate, energetic, civil team leader who loves being out there doing it. He’s been a key part of the company all his working life and living the dream. Being up to the neck in mud each day, he’s known for getting stuff done.

Rochelle Administration Manager

Rochelle is the driving force behind our finance team. Managing billing, payroll and more, she knows everything relating to your accounts.

Services and specialisations

Choose CMT Group as your trusted provider for top-tier equipment rentals, precisely tailored to meet the specific requirements of your projects. Available per hour, day or project.

Trailer mounted Air compressor

With minimal noise pollution the diesel generated Rotair air compressor has up to 174psi operating pressure. Its max engine power at 2200RPM is an impressive 93kW. A great asset that provides dependable compressed air for:

- Handheld pneumatic tools
- Abrasive blasting
- Cable blowing
- Renovation and construction jobs
- Roadworks
- Quarrying
- Rental companies
- OEM applications

Mobile crusher and screener

For smaller scale onsite quarry work. See below for all capabilities.

Pump

D285 MP100 Silenced Pumpset for dewatering - with a Perkins Engine - 150mm (6in).

Drilling Rig for tactile installation

Our state-of-the-art drilling machine effortlessly navigates long platforms, curves, and corners. Allowing clients to insert thousands of tactile studs into each predrilled hole in record time. This can be used in a live setting, bustling with buses or pedestrians with minimal HSQE risks. Discover how our remarkable drilling solutions and meticulous approach can transform your project.

Hydro Excavation Unit

- Precise digging: Safely excavate with high-pressure water and vacuum technology.
- Safe and fast: Minimize damage risk, work faster, and reduce costs.
- Eco-Friendly: Environmentally friendly excavation method.

Heavy Machinery

Excavators: Boost productivity with efficient digging and material handling.

- i. Versatile: Adaptable to diverse tasks and terrain.
- ii. Precision: Perfect for trenching and foundation work.

Crushers: Recycle materials like concrete and asphalt efficiently.

- i. Cost Savings: Reduce transportation and disposal costs.
- ii. Speedy: Process large volumes quickly for project acceleration.

Choose CMT Group for quality equipment rentals, tailored to your specific project needs.

FOR HIRE

View terms and conditions here:
cmtgroup.co.nz/machinehire



Our range of equipment means we can take care of any job



Civil capabilities

Get your civil project completed according to your timeframe, by using our experienced team. Your new subdivision, large earthworks, commercial roads, or drainage projects will be skilfully coordinated by our Project Managers to Tōtika HSQE pre-qualification standards. Our vast range of completed projects will give you confidence in the quality and scale of our work. They also showcase our extensive capabilities across varying tasks at different locations.

Our experienced Civil team have worked with multiple leading New Zealand organisations to complete their project. This includes Kiwirail, Waka Kotahi, iReX, and Kāinga Ora.

Our certifications include



Crushing and screening

Our R3 Crusher is a game-changer for efficient, eco-friendly, and budget-smart projects. Teamed with the Keestrack K3 screen, gravel can be easily graded into different sizes for any project. The K3 is designed for efficient and high-capacity screening of a wide range of materials.

The K3 Screener

The K3 screen can be used for a variety of screening applications, including:

- Separating aggregates into different size fractions for use in construction or road building.
- Screening topsoil and compost to remove debris and produce high-quality soil products.
- Grading and separating ores and minerals in mining operations.



The R3 crusher

From limestone and various low to medium abrasive natural rocks to concrete, primary and secondary crushing is covered. Whether it's construction waste, demolition waste, gravel, asphalt, or even coal – count on the R3 to handle it.

- Crush allurial gravels into spec material such as AP65, AP40, AP30, AP20, draingage chip & crusher dust.
- The R3 Crusher makes recycling a breeze. Transform waste into valuable materials, lowering your impact on the environment. Embrace sustainability while meeting project demands.
- Waste no more money on pricey primary aggregates. The R3 Crusher repurposes waste into premium materials without straining your budget.
- Flexibility is key, crushing at 250 tonnes per hour let us come to you, equipped with the R3 Crusher. Quality crushing, wherever you need it.
- With the R3 Crusher, experts handle your waste safely and precisely, ensuring top-tier results for your project.
- Embrace the future of construction waste. Opt for the R3 Crusher service and show that efficiency and the environment go hand in hand.

Ready to revolutionize your waste management? Contact us now to discuss how the R3 Crusher fits your project. Let's make your next endeavour efficient, eco-friendly, and exceptional.



Bulk earthworks and subdivisions

Easily establish your new subdivision or earthwork project with us by your side. Our kiwi ingenuity and years of experience with New Zealand soils and landscapes means we know the best way to approach land alterations. From commercial sites to residential subdivisions, and land clearing, we have the skills and machinery to handle the removal or reuse of large amounts of excavated material quickly and efficiently.



Commercial civil and site works

Organize site excavation for your project with our expert team and inhouse equipment. From site reworks to full development, including soil or concrete removal, we can take care of it. Do your part for the environment and let us crush your waste concrete to repurpose on other projects.



Commercial roads and car parks

Influence your key stakeholders with our Waka Kotahi approved civil capabilities. Our prequalification certificate for physical works at levels 1C for Routing & Minor Works, and 4C for Construction means your commercial roading project can get started right away.



Retaining walls

Transform your landscape with the addition of retaining walls. They can be built in any range of materials to suit your site, and with our own excavators on hand, these projects can be completed quickly.



Drainage and pumps

Fabricate your stormwater, sewer pump or water-main upgrade with our certified drain layers. We'll adhere to your local council's regulations and environmental policies throughout the project.



Trenching works

Easily complete your trenching project with our Hydro Excavation truck. This enables a more precise excavation for installation of live services, pipework or ducting and culverts. For larger requirements we can use our extensive range of excavators and machinery.



Bridges, tunnels, and concrete structures

Manage your next complex build with us by your side. Our Impac Prequal qualification means you can be confident we constantly exceed or meet industry standards throughout. Your large multifaceted concrete structures, bridge or tunnel can be effortlessly planned and created by our team.



Quarry

Gravel acquisition is easier than ever with our quarry, Spray River Flats, located in Waihopi Valley, Marlborough. Spanning over 40 hectares the quarry is based around 45km from our Head Office. As per council regulation, around 20,000 cubic meters of gravel will be extracted a year and replaced with clean fill from our other construction sites.



5 reasons You need a Hydro Excavation truck for your next civil project



If you're about to start your next civil project, then why not consider using a Hydro Excavation truck? Traditionally civil works such as installation of posts, poles, plumbing pipes and excavation have been done by hand. This is time consuming, poses safety risks to staff and can cause unnecessary damage to the surrounding land and wildlife.

A Hydro Excavation truck uses the process of pressurized water to remove soil by turning it into a dirt slurry. This slurry is sucked up into the truck and replaced into the ground when the work is done. This is a non-invasive way to remove soil for uncovering small patches of underground areas to locate utilities or to excavate at greater depths.

1. SAVE TIME: A Hydro Excavation unit will save you more time that using traditional labours. Highly pressurised water is used with an air vacuum in the system to dig and move soil at a much faster rate than people with spades or an excavator.

2. SAVE MONEY: The unit will save you money because of fewer repairs and backfilling needed during a job. It's so precise, less mistakes are made, and a cleaner job is done.

3. IT'S LESS IMPACTFUL ON THE ENVIRONMENT: The targeted system and vacuum mean that no extra soil or wildlife is disturbed during a project. Further to this, existing pipes and underground utilities can easily be avoided so no damage is made thanks to the precise action.

4. SAFETY BENEFITS ARE HUGE: The Excavation truck can be operated by two people easily without the need for extensive PPE gear. The system is confined and there is no risk of machinery accidents or construction mishaps. The truck can be positioned away from traffic to enable free flowing traffic through the site. The truck can also be used in restricted spaces such as a residential area or smaller commercial site.

5. RESOURCE CAN BE DELEGATED: The truck can easily move from job to job, freeing up your internal resource and enabling staff to concentrate on other priority parts of the project.

CMT Group have a Hydro Excavation unit that is available for site works around Marlborough. Get in touch with us to book it for your next project.

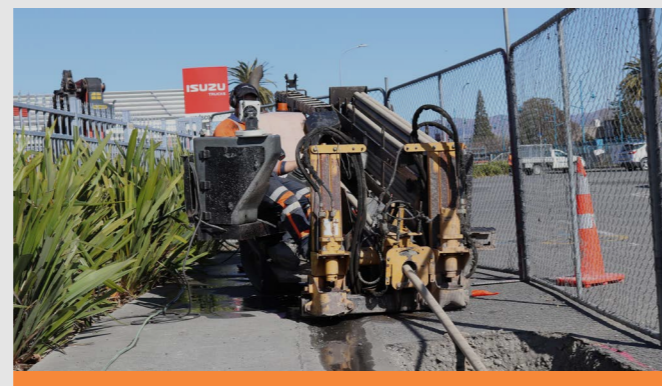
Directional Drilling

Directional Drilling's core advantage is traversing waterways and rugged terrain without altering bridges or above-ground installations. This preserves pipes, ensures precise installation, and underscores our leadership in sturdy directional boring equipment.

Trenchless methods minimise disruptions and remove the need for excess digging, slashing time, and costs. Our rig enables efficient conduit installation and allows for time savings for you.

You can take advantage of reduced labour due to quicker operations, and minimal dirt disturbance that cuts expenses. Fewer permits, easy mobility, and enhanced access contribute to administrative and operational savings.

Traditional methods disrupt the soil with earth removal and contamination. Opting for a directional drill aligns with eco-conscious goals in cable, sewer, and utility installation.



Construction capabilities



EV charger installation

We've recently excelled in installation of EV chargers across the South Island. Working for BP, GoBus and Z Energy to help them realise their sustainability vision. Our technical capabilities include:

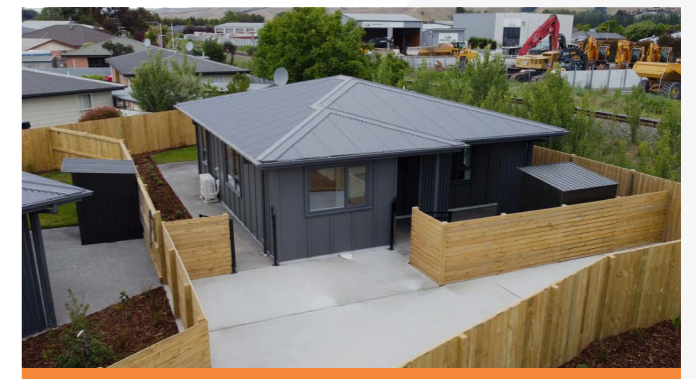
- Mitigating risk in highly controlled spaces such as a forecourt
- Managing fire and spark risk during excavation
- Flexible and efficient team for minimizing customer disruption (so fuel sites can remain open while installation takes place)



New builds and offsite prefab manufacturing

If you're in the early stages of planning new construction projects, such as a pump or chemical shed, a large commercial building, with concrete tilt panels, or steel structures, you can count on our team to be your trusted partner every step of the way. Our construction team can manage large subdivisions and warehouse builds to meet your deadlines.

Our large yard means we can easily construct prefabricated buildings, bridges and more, and have them delivered to you, without the hassle of onsite restrictions. We're trusted partners with many large organisations such as Kāinga Ora and iReX so you can count on us delivering projects.



Alterations and maintenance

Wanting to make changes? We can help demolish buildings, refurbish your business, or make significant extensions to get the perfect office fit out or update. Send us your plans or ask us for suggestions on how you can make changes to suit your business.

Seismic strengthening

Adhere to seismic strengthening standards with upgrades and earthquake strengthening for commercial and industrial buildings. After working through the Christchurch earthquakes, we have a in dept knowledge of all possible structural upgrades and retrofit solutions for your existing building. Including innovative earthquake resistance solutions for new builds.



Fit-outs

Transform your hospitality, office, and retail spaces with our commercial fit-out construction services. From floor to ceiling, our teams work quickly to get your restaurant or business up and running as fast as possible, while keeping to our excellent standards.



CMT have been providing a very good level of survey in a complex spiral shape and the level of delivery of the woodwork and landscaping works is of very high calibre. They're demonstrating good craftsmanship over the whole project. CMT Group have been providing excellent service to this project on a timely and committed fashion.

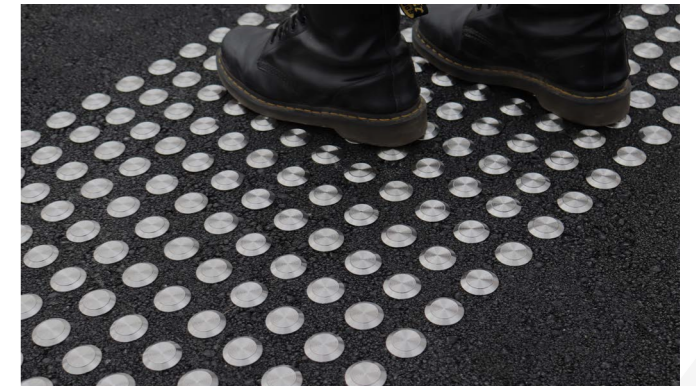
NEIL ANDREWS CHRISTCHURCH CITY COUNCIL ON WORKS AT TAKAPŪNEKE

Architectural Safety Solutions



Safer spaces for all walks of life

We're the home of Total Tactilez, providing architectural accessibility solutions for a range of commercial clients and Architects. Head over to the Total Tactilez website (www.totaltactilez.co.nz) or brochure to see tactile indicators, stair nosings, precast tactile pavers and more. View our Masterspec listing and reach out to us, we're happy to help with your specification.

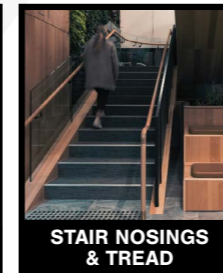
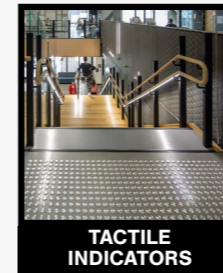


Tactile indicators

- Brass
- Aluminium
- Stainless steel
- Polyurethane tactile studs
- Polyurethane tactile directional bars
- Bladed Shaft tactile indicators
- Tactile concrete pavers
- PVC tactile mats
- Polyurethane mats

Stair nosing

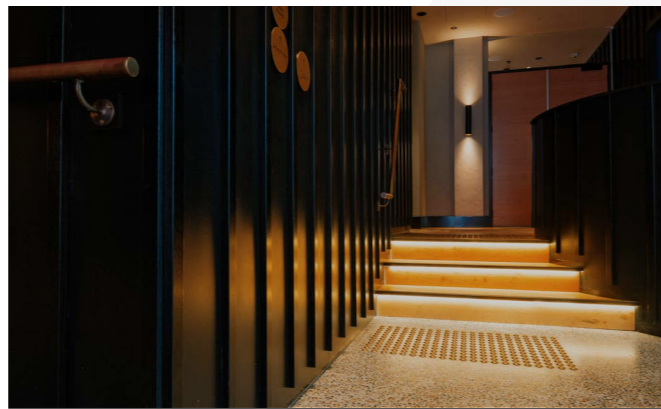
- Brass
- Surface mount
- Rebated timber tile
- Carpet and Vinyl
- Other nosings





Anti-slip products

- Anti-slip discs
- TKR016 Tredfx Carborundum Surface Tread
- GKR017 Tredfx Carborundum Stair Nosing
- GKR030 Tredfx Gript Series
- GKB022 Tredfx Gript Series Treadplate
- People Treads



Floor trims and covers

- EC2V Tredfx Expansion Joint Covers
- EC2R Tredfx Expansion Joint Cover
- IRF1180 Integra Mat Frames
- TRP33H Tredfx Floor Trim
- TRP44R Tredfx Floor Trim
- CSA Series Tredfx Floor Trim | Total Tactilez NZ
- FCS Series Tredfx Floor Trims | Total Tactilez NZ
- ETV3 Tredfx Floor Trims
- ETC6 Tredfx Floor Trims: Edge trim for carpet and tile

Other

- Skate Deterrents
- Car Park Wheel Stops
- CA290 Adhesive
- Adjustable Threshold Ramps
- Tactile Tape



Introducing the Total Tactilez Drilling Rig



This state-of-the-art drilling rig is designed to meet the demands of modern construction and railway projects.

Unmatched speed and productivity

The Total Tactilez Drilling Rig boasts an incredible drilling speed, approximately 13.8 times faster than conventional machines. With an impressive rate of 5170 holes per hour, this rig can significantly accelerate project timelines and boost productivity. It's the perfect solution for time-sensitive and large-scale drilling tasks.

Navigates curves with precision

Engineered with advanced technology, the Total Tactilez Drilling Rig effortlessly navigates curves with precision. This unique capability enables construction teams to access challenging terrains and execute projects in areas previously deemed inaccessible.

Reduced time on-site

With the Total Tactilez Drilling Rig's exceptional speed and precision, tactile projects are completed in record time. Reduced time on-site means significant cost savings and increased overall project efficiency.

De-Risks tactile installation

Gone are the days of uncertain tactile installations. The Total Tactilez Drilling Rig's precision drilling guarantees accurate installation of components, eliminating errors and costly rework. Ensure a seamless and flawless installation process every time.

- Minimal site shutdown time.
- Reduced dependence on Railway Protection Offices.
- Less manual labour involved.
- This cutting-edge drilling rig significantly reduces the need for manual labour, freeing up resources for more strategic and value-added tasks. Improve worker satisfaction and optimize your workforce.

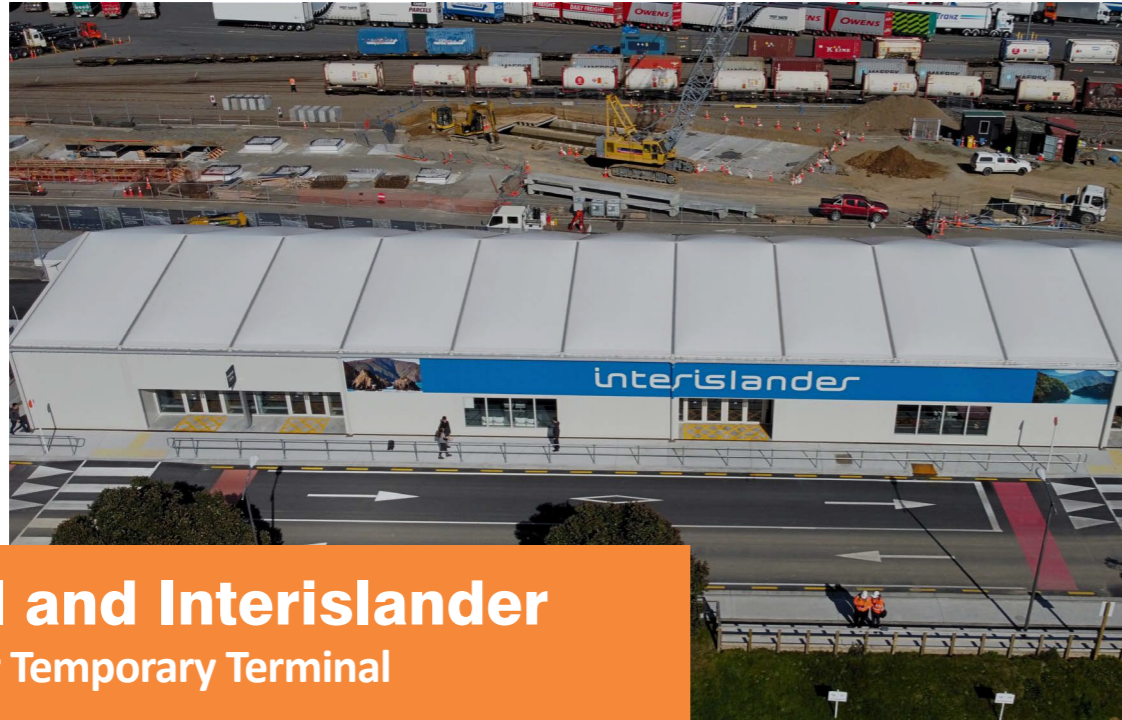
Superior dust contamination mitigation

Total Tactilez Drilling Rig implements best-in-class measures to mitigate environmental dust contamination. Enjoy cleaner worksites and adhere to strict environmental regulations without compromising productivity.

Total Tactilez Drilling Rig is a game-changer in the drilling industry, bringing together speed, safety, efficiency, and sustainability in one innovative package. Upgrade your drilling operations today and experience the next generation of drilling technology with Total Tactilez.

Expertise and experience

Blenheim project portfolio



KiwiRail and Interislander
Interislander Temporary Terminal
\$6.5 Million

Efficiently managing site preparation, we conducted bulk excavations, connected roading and fencing, and promptly commenced foundation and floor work. Our team skilfully installed external cladding and attended to interior details like insulation, linings, stopping, painting, and trim work. The Temporary Terminal building underwent a final fitout. Due to climate change, the Rental Car Kiosk was relocated for safety, and we added ramps, stairs, and handrails. We provided logistical support for smooth ferry embarkation and disembarkation.

“Please pass on our appreciation to the team involved for helping to achieve walk on Nov 1st date for the business. Has been a huge drive right to the end! Thank you”. WEN WANG IREX PICTON TERMINAL LANDSIDE DELIVERY MANAGER

Capabilities: Civil and Construction



Kāinga Ora
Patchett Way Subdivision
\$5.82 Million

Completed the development of a residential subdivision, comprising 15 standalone two-bedroom homes. We undertook all civil work, utility connections, building construction, precise fit-out, and meticulous landscaping.

Capabilities: Civil and Construction

Expertise and experience



Kāinga Ora
Charles Street Subdivision
\$4.35 Million

Ten one-bedroom houses (six stand-alone homes and two duplexes) including all basic amenities. To ensure accessibility, a new roadway was developed, and additional driveways were built from the road for units nine and ten on Charles Street and Richmond Street.

Capabilities: Civil and Construction



Kāinga Ora
Brewer Street Subdivision
\$4.3 Million

Awarded a merit award in the Property Industry awards 2023

Transformed an underutilised space into 14 brand-new, warm, dry homes, providing a much-needed housing solution for Marlborough families. Each house features 2 bedrooms and modern living facilities built to stand the test of time.

Capabilities: Civil and Construction



Expertise and experience



Marlborough District Council
Renwick Water Treatment Plant
\$1.9 Million

Functioning as a key subcontractor under Simcox Construction, CMT Group was entrusted with overseeing the construction aspects of the water treatment plant. Renwick's water upgrades have unfolded with the completion of a new reservoir in 2020, the operational launch of water meters in July 2021, and the drilling and development of new wells at Conders Bend Road.

Capabilities: Civil and Construction



KiwiRail and Interislander
iReX Temporary Gangway
\$1.46 Million

Completed the construction of a passenger gangway and covered walkway reaching from the Interislander Temporary Terminal to the ferry boarding dock. Completed this project on a very tight timeline of two weeks to maximise customer safety and accessibility. The walkway uses recycled shipping containers and is equipped with lighting, windows, a speaker system, multiple safe exits and more.

Capabilities: Civil and Construction



KiwiRail and Interislander
iReX Rental car kiosks
\$665K

Transported the existing rental car kiosks to their new locations. Constructed a new base, deck and carpark for the rental cars. Seamlessly integrated the relocation and construction around other works.

Capabilities: Civil and Construction

Expertise and experience



Kiwirail
iReX Turntable
\$1 Million

As the main contractor for the project, our task was to complete civil work and establish a foundation for the new turntable. The previous turntable lacked accurate records of underground services, necessitating the use of advanced equipment, meticulous research, and precision to avoid damage to undocumented works. Our team adhered to a strict timeline, managing stakeholders to deliver an exceptional product. We created a solid foundation for the turntable, laid the bricked space for installation, installed handrails, and met the client's specifications.

“CMT have delivered some highly complex and important works on the IREX Project safely, to a very high-quality standard, on time and within agreed commercial parameters. I would highly recommend CMT for undertaking similar works as described above – they are a very capable and committed team with a collaborative attitude.” HARRY SINGH KIWIRAIL PROJECT MANAGER

Capabilities: Civil and Construction



Awatere Hub committee
Education hub
\$1.18 Million

A new hub for Plunket, Awatere Early Learning Centre and Playcentre funded by the community. Inclusive of three separate sections and playground. This building is a unique centre unlike any created before for these organisations. A central place for all the community to meet.

Capabilities: Civil and Construction



Marlborough District Council
Seymour Square restrooms
\$567K

This building was awarded Winner - Public Architecture: Marlborough District Council - Public Toilet Upgrades by Arthouse Architects.

The works consisted of the demolition of half of the existing public toilet in Seymour Square. The construction of a new public toilet building housing men's, women's, and accessible facilities with a covered walkway around complete with associated new fittings, finishes, drainage, lighting, and landscaping.

Capabilities: Civil and Construction



Expertise and experience



Manawa Energy Lake Argyle \$471K

The new office at lake Argyle is the first improvements for Manawa Energy since the original, iconic, building was erected in the 1980s. The new building allows for staff to comfortably work and meet near the dam.

“Congratulations to CMT Group NZ Ltd and Taylors – Urban | Infrastructure on delivering the project safely and to a high standard of quality.” PULKIT GOYAL PROJECT MANAGER TURNER AND TOWNSEND FOR MANAWA ENERGY

Capabilities: Civil and Construction



Marlborough District Council Boulevard Park on Taylor \$2.5 Million

This is a fantastic demonstration of our civil capabilities on a major subdivision. On Stage 7 of the Boulevard Park on Taylor, the Marlborough District Council engaged CMT Group to carry out all sub-division works as a main contractor. Our scope of works included:

- Site clearing/scraping.
- Bulk excavation of trenches for drainage lines
- Installation of new drainage lines and systems (stormwater and sewer).
- Installation of manholes, inspection joints, sumps, etc.
- All concrete/paving works, including preparation.
- Road formation.

Capabilities: Civil and Construction



Hydralada Company Ltd Hydralada Office build Blenheim \$3 Million

CMT Group were the main contractor responsible for the implementation of this project.

- Completed major demolition to remove the prior building and create a fresh start for the construction to begin.
- Conducted all excavation work and infrastructure services for the new facility.
- Completed all building and carpentry work from bases through to building completion.
- Did all the internal fit-out. Created a comprehensive space to a high quality.
- Created concrete hard stand areas that will withstand the test of time.
- Completed all landscaping and final touches to make a practical, aesthetic space exactly as the client required.

Capabilities: Civil and Construction

Expertise and experience

Canterbury project portfolio



Citycare Canterbury Takapūneke Memorial Reserve, Akaroa Canterbury \$1 Million

We worked with local Tāngata Whenua and City Care to develop a memorial that pays respect to the history of the area. Special Tapu rituals were accounted for when developing this land. This includes not being able to drink on site and ensuring excavated material did not leave site.

The works comprise of earthworks (cutting and filling), the construction of low retaining walls and landscape features within the upper north-eastern portion of Greens Point Reserve (Wider Takapūneke Reserve) and the installation of a pou.

Capabilities: Civil and Construction



Kāinga Ora Cobra and Ensign Sts Canterbury \$2 Million

Construction of eight, one-bedroom single story homes on a lot size of 809m².

As part of a larger package, including 23 Cobra Street, CMT Group was the main contractor for this project. These duplexes are accessible and made to a 6 Homestar standard. We undertook the following:

- Completed civil work including installation of three waters and connections for other utilities.
- Formed and poured all concrete foundations with the support of reinforcing steel.
- Constructed four, one-bedroom houses safely and efficiently to Kāinga Ora's plans and Homestar standards.
- Created roadway and completed landscaping leaving an aesthetic, made to last subdivision.

Successfully achieved compliance with the project specification and local authority requirements throughout the project.

Capabilities: Civil and Construction



BP and Z Energy EV Chargers \$1.25 Million to date

We installed a myriad of EV chargers for BP around Canterbury. These installations required multiple skills including:

- Mitigating risk in highly controlled spaces: Working underneath a forecourt.
- Managing fire and spark risk during excavation.
- Flexible and efficient team for managing customer disruption.
- Coordinating with Onsite Contractors.

These technical challenges provided valuable opportunities for growth and innovation, allowing us to demonstrate our expertise and commitment to delivering exceptional results. We overcame obstacles while maintaining the highest standards of safety, efficiency, and customer satisfaction.

- Key installations:
- Blenheim
 - Picton
 - Fendalton
 - Russley Road
 - Edgeware
 - Marshlands
 - QE II
 - Rangiora
 - Ravenswood
 - Richmond
 - Timaru

Capabilities: Civil and Construction

Expertise and experience



ECL
Go Bus EV charger Depot
Maces Road, Christchurch
\$250K

As a subcontractor to ECL group, we constructed the first Go Bus electric charger depot in New Zealand. Based in Maces Road, the depot which consists of 25 Siemens EV chargers is the first in a network of electric vehicle chargers at Go Bus depots across the region. Conducted all excavation work and infrastructure services for the new chargers. Completed all the building work for the bases of each unit. Finished off the surrounding area ready for vehicles to use the service.

Capabilities: Civil and Construction



Agvance
Agvance Warehouse and office
\$1.6 Million

The huge 2200-square-meter extension is constructed of concrete tilt panels and steel structure. Over the project we stood 45 panels in two and a half days, one of our most efficient projects.

Capabilities: Civil and Construction



Selwyn District Council
Pines Wastewater Treatment Plant
\$1.1 Million

We were a subcontractor to Monadelphous. This project was split into two parts the solar drying hall and a control room. CMT Group managed the whole design and build, including architecture.

Capabilities: Civil and Construction

Expertise and experience



Kaikoura District Council Kaikoura Aquatic Centre \$3.2 Million

A new outdoor town pool was funded by the community, and we delivered.

- Bulk earthworks
- Drainage and civil services
- Road and parking construction
- The construction of three swimming pools ranging from lap pool to toddler pool
- Construction of a changing room, toilets, pump house and reception surrounds, seating, and fencing.

Capabilities: Civil and Construction



HEB Construction Avon River Corridor Bridges \$578K

This specification was for the carpentry package for the approach structures on the bridges along the Avon River Corridor. Some bridges are in the Red Zone and some partially in road corridors. The bridges are:

Medway Bridge: Adjacent to Medway Street (East) spanning towards Avonside Drive

Avondale Bridge: Adjacent to Briarmont Street (North) spanning towards New Brighton Road

Snell Bridge: Adjacent to Snell Place (South) spanning towards Avonside Drive

CMT Group was responsible for the supply of all plant, materials, and labour to construct access ramps at three locations along the Avon River corridor. All work was carried out as specified in the Christchurch City Council's Construction Standard Specification CSS: Parts 1-7: 2005, the NZ Building Code and general good construction practice.

Capabilities: Construction



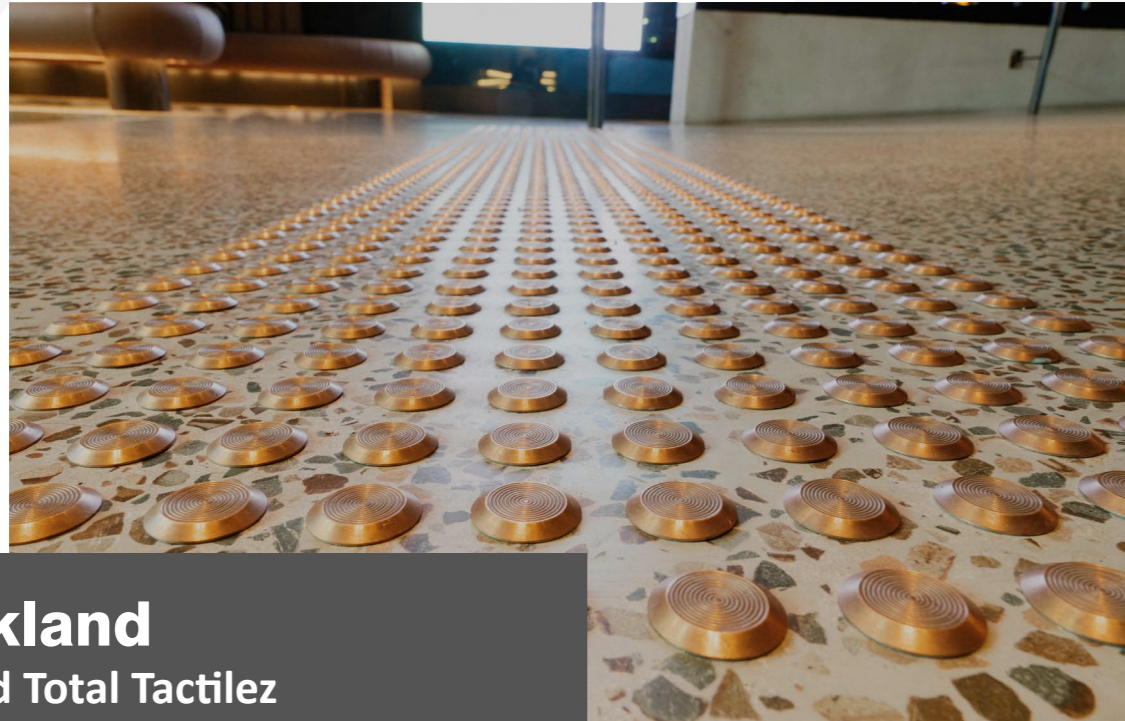
Selwyn District Council Circular concrete reservoir \$1.38 Million

CMT Group built a circular concrete reservoir to supply roughly 1 million litres of water for the township of Lincoln, Canterbury. During the summer months Lincoln often suffered from drought and the town supply of water dwindled. Therefore, the community was happy to see a new water tank being built.

On the same site, a control building and pump building was also required to finish the project. The build of this included tilt slab panel construction.

Capabilities: Civil and Construction

Total Tactilez projects



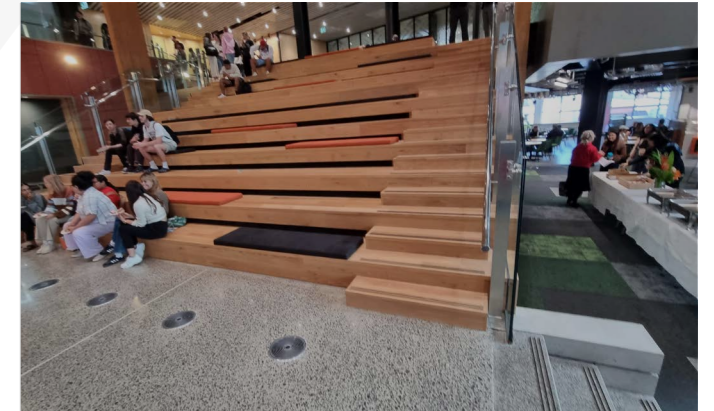
QT Auckland QT Auckland Total Tactilez

To complement their luscious art vibe in their main foyer, the architects chose our brass tactiles leading up the main accessible entry ramp. 2400 brass dots were placed here and next to the entrance staircase with matching brass nosings. These tactiles were easily installed in the modern vinyl flooring.



Kiwi Property ANZ house Total Tactilez Sylvia Park

Supplied and installed 1000 timeless brass tactiles to compliment the unique spiral staircase in the foyer. These tactiles easily adhered to the new tile flooring.



Hawkins, Waikato University The Pa Total Tactilez

We supplied PKD406 for a perfect finish on this projects carpet and vinyl surfaces. The short, raked front and grit insert is perfect for high traffic indoors. Our new rebated nosings also worked well with the aesthetic wooden staircase near the entry.

Total Tactilez projects



Downer Wellington City Lambton Quay bus station

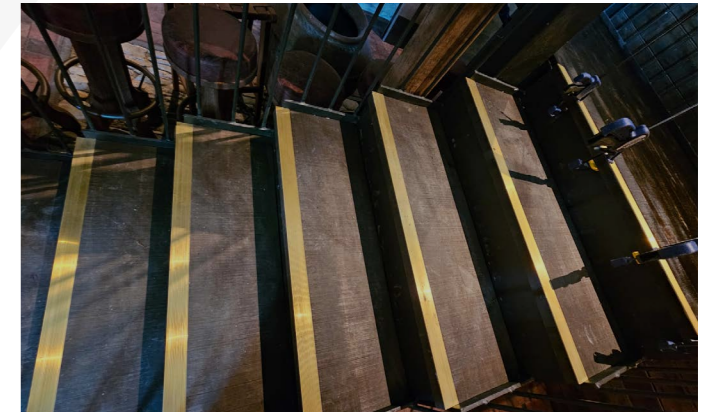
Our exceptional drilling capabilities effortlessly created over 150 meters of drilled holes for this project.

Our state-of-the-art drilling machine expertly manoeuvred around the platform, effortlessly navigating curves, and corners. The installation team from Blenheim then diligently inserted thousands of yellow polyurethane tactile studs into each predrilled hole. This impressive undertaking took place in a live setting, bustling with buses and pedestrians. However, our unwavering commitment to high standards of Health, Safety, Quality, and Environment (HSQE) ensured minimal disruption, allowing our work to progress seamlessly.



Naylor Love construction Wesley primary school

Our team is responsible for the installation of black stainless-steel tactile studs in a variety of concrete and timber surfaces aid the visually impaired. In addition, the Total Tactilez team installed black rebated aluminium bar nosing's to some concrete steps and aluminium Tredfx nosing's to concrete and timber steps to reduce stair-related injuries.



Cook Brothers construction Ayrburn Domain

Supplied our Brass Rebated nosings to finish off the beautiful aesthetic look and feel of this building.

Testimonials and references

CMT have recently completed the construction of a purpose-built early childhood facility incorporating Awatere early learning centre, Awatere Playcentre and Plunket on the Seddon School grounds. CMT outlined how they intended to complete the project during the tender process and were awarded the contract to construct the facility.

Their management and communication during the project was excellent. The regular reports provided were just what the trust needed to show our stakeholders and community as the project progressed. Due to the resources and capabilities provided by CMT the project tracked better than we would have expected given the delays caused by weather and Covid.

Awatere ECE Hub Community Trust with the help of CMT has provided a well-built top quality community asset which will provide benefits for our wider community for generations to come.

We would highly recommend CMT to any group looking to provide a similar asset to their community.

Phil Muir, Chairperson, Awatere ECE Hub Community Trust

We often call on the Total Tactilez team at CMT Group to price up jobs for us. They turn around quotes quickly and I don't even have to think twice about how fast they can deliver. I can count on them for a quality product and a fantastic install, no matter where in the country we need them to go. Their specialist installation methods make easy work of difficult projects with often multiple different flooring surfaces. We would recommend them to any flooring company looking to install a variety of tactiles, stair nosings or whatever tactile ground safety indicator they need.

Caleb Hill, Lovich Floors

Clientele and Partnerships

Approved Provider For



Sustainability and environmental responsibility

We've implemented waste sorting bins at our construction sites. Here we aim to reduce waste to landfill by 60-85%. The process involves having three main sorting bins or skips onsite for the disposal of plastic, paper, and metals. Timber waste generated is bundled up and resold. Or in other cases, repurposed into something useful for the community such as steppingstones for a local kindergarten. With all our Kāinga Ora builds, the specification is to a Homestar 6 rating, which is the superior sustainable housing rating.



Sponsorships

CMT Group worked together with our staff to identify key organisations and raise awareness of their cause. The three organisations that most aligned with our vision are Mates in Construction, Trees That Count, and Ronald McDonald House Charities. Each year we will donate \$1000 to each cause and actively promote awareness of each charity.



HSQE

Health & Safety Certifications



We're committed to making our workplaces safe for everyone, from employees and subcontractors to visitors and the public. Our Health and Safety Management Systems exist to ensure all processes within our organisation are safe. We have a robust recruitment process and commit to comprehensive, ongoing safety training for all workers. As part of our safety culture, we include all staff in regular discussions about how to improve safety together.



Construction Leaders in Health and Safety

Subcontractors form a large part of CMT Group's workforce, and we make sure they understand and participate in our safety systems and share our safety values. Working with our subcontractors to improve safety is critical to achieving our goal of always safe, healthy, well and match-fit people.

To make it easier for all our people, we use cutting edge SHE software to make smarter health and safety decisions in everything we do. All employees and subcontractors have an app on their phones to provide real time information on hand when required.



Join our team



We have a dream to become the most desirable construction workplace. This means when you start with us, you'll be welcomed with open arms.

At CMT Group the expectations are higher, and the rewards are greater. That's how we deliver exceptional service to our customers. From our Sales team to Truck Drivers, our performance matters and that's why we have industry leading benefits and rewards. We're dedicated to building for the future, so we invest in our community and future generations.



Work for us

Join our growing team in the South Island - head to cmtgroup.co.nz/workforus to see our list of vacancies.



Apprenticeships

While having qualified team members is a must, we recognize the value apprentices can bring. Our staff turn up to work with a purpose and a mission to complete their studies. We'd recommend instilling an Apprenticeship Program to any construction company as a way of sharing knowledge and increasing staff engagement. If you're thinking about a career in construction or civil engineering, get in touch with us.

Contact Us

/// **Blenheim**
12 Taylor Pass Road
Witherlea,
Blenheim 7201

/// **Christchurch**
101 Sturrocks Road,
Casebrook,
Christchurch 8051

/// **Auckland**
62 Tidal Road,
Mangere,
Auckland 2022

0800 147 433
info@cmtgroup.co.nz
cmtgroup.co.nz